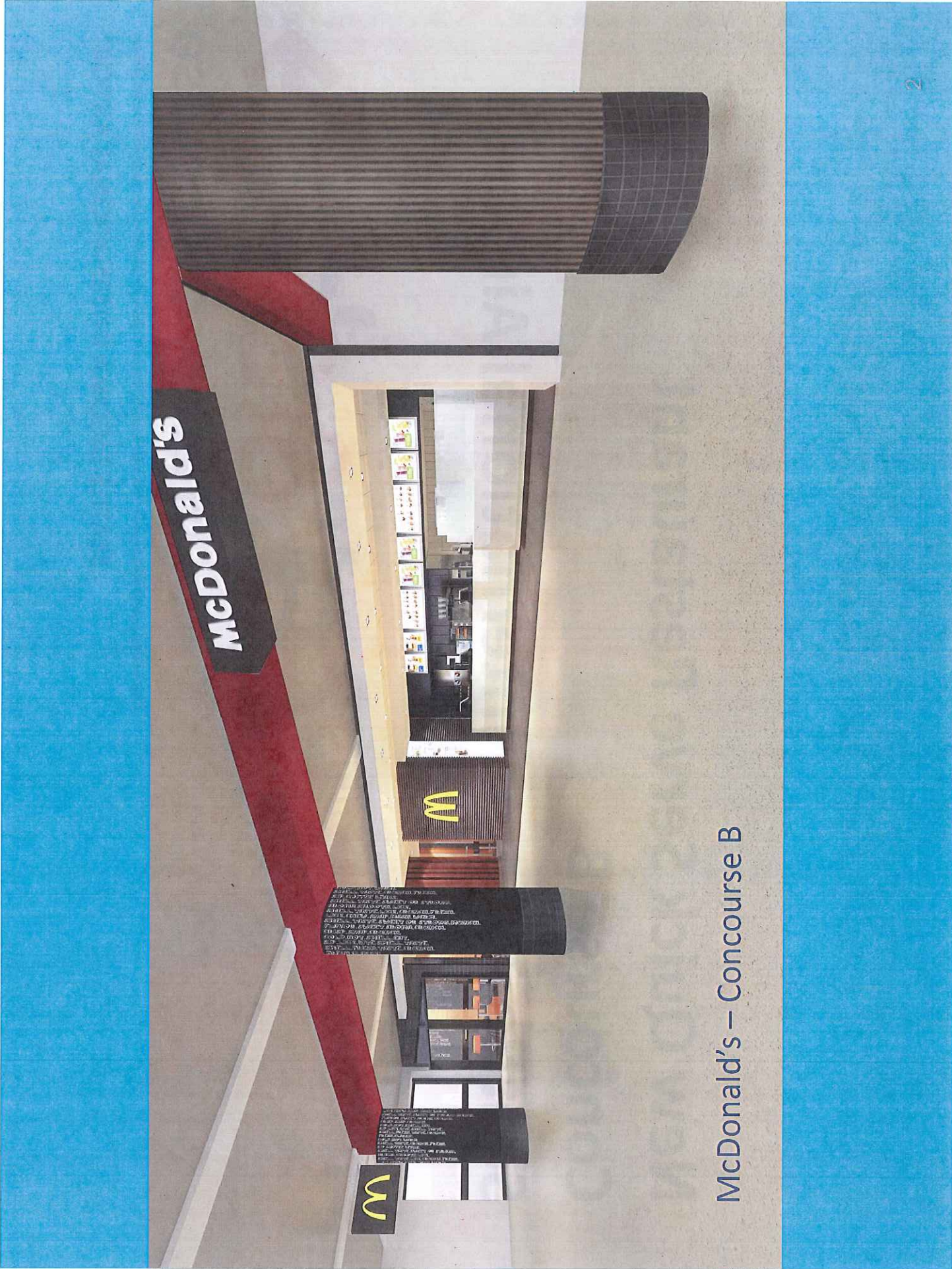


Item Number: 6c Exhibit A
Date of Meeting: 03/06/2012

New Quick Serve Restaurant Concourse B Seattle-Tacoma International Airport



SEATTLE-TACOMA INTERNATIONAL AIRPORT



McDonald's

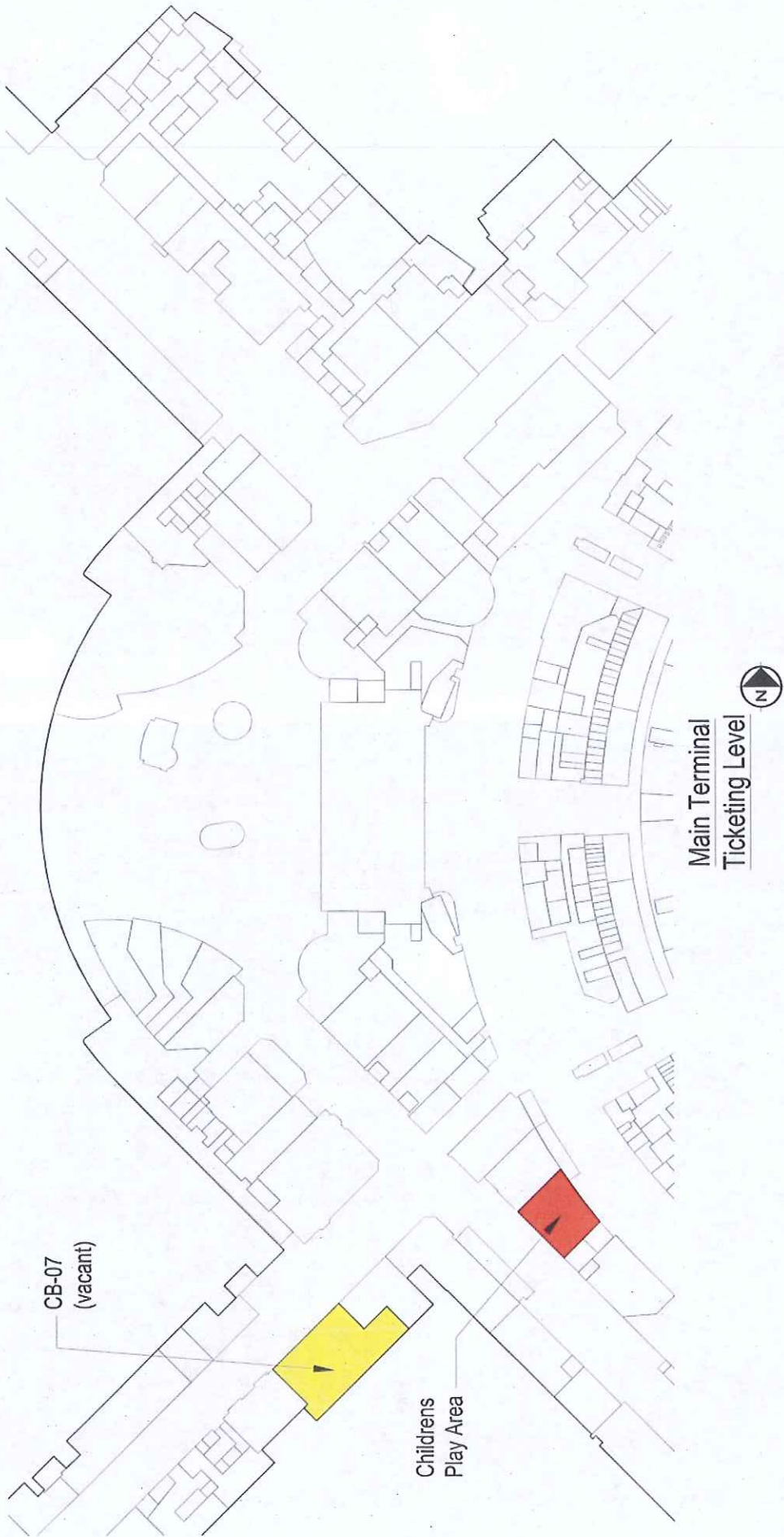


McDonald's is a leading provider of fast-food services. The company's commitment to quality and customer service is reflected in its extensive menu and efficient service process. The new Concourse B location will provide a convenient dining option for passengers and staff alike.

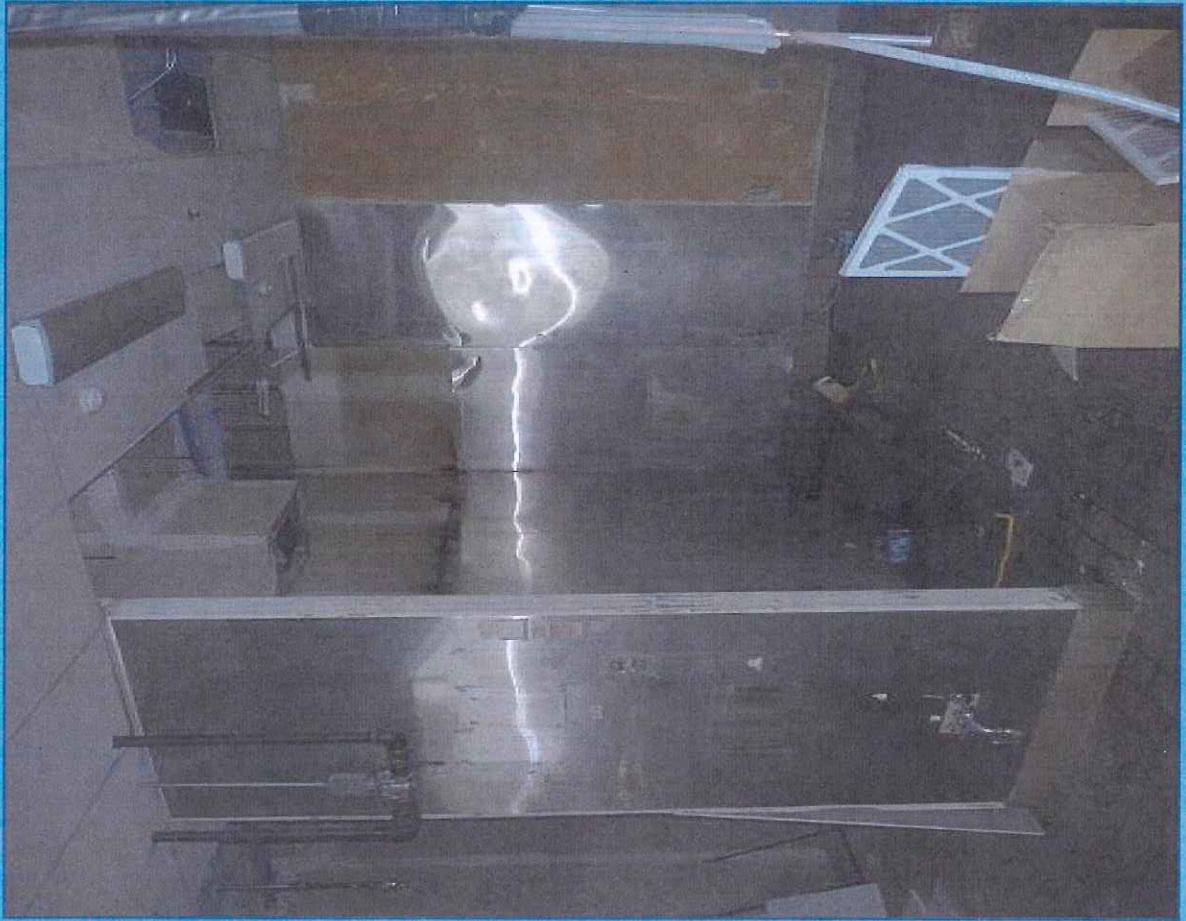


McDonald's – Concourse B

Central Terminal: Stretching food service capacity

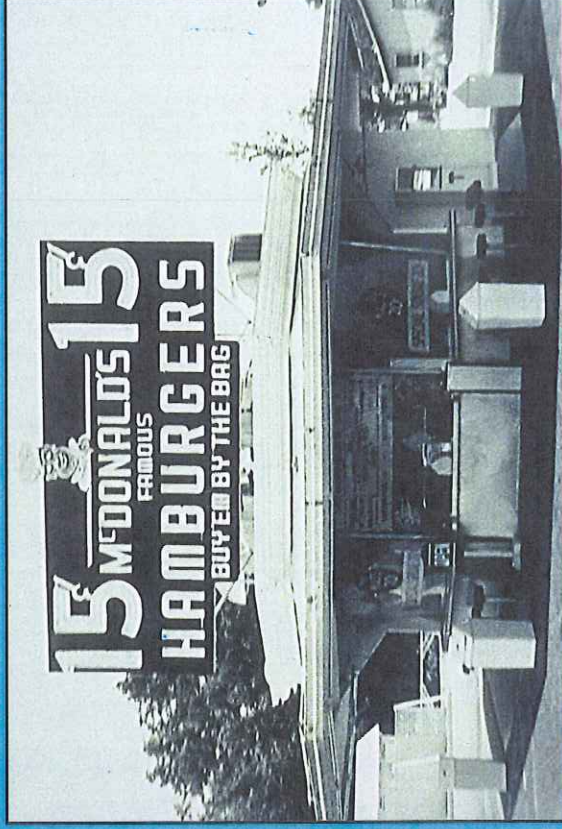


Concourse B: Vacant since 2005 (former China First)

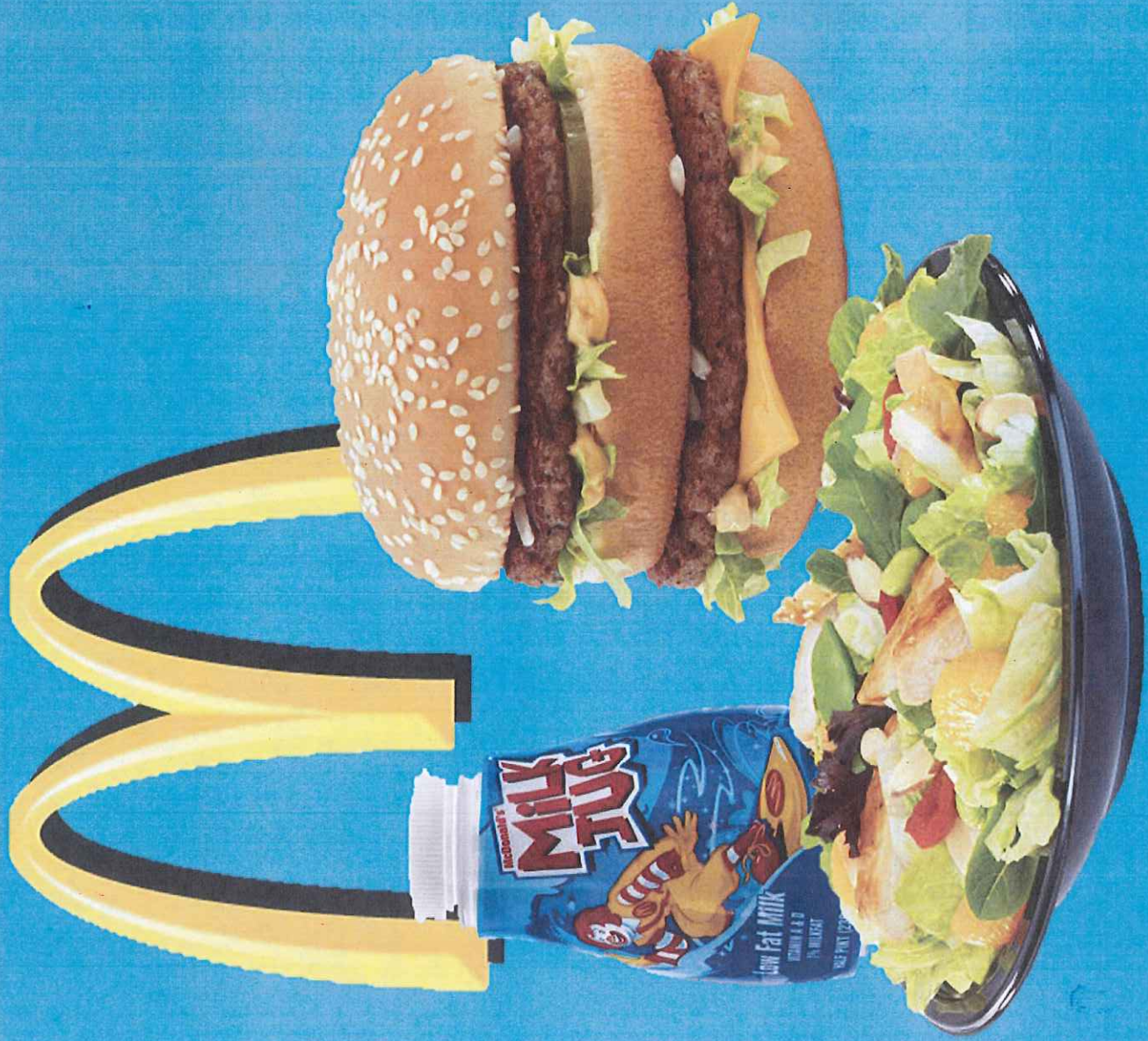


Why McDonalds?

- Most requested concept by travelers
- Demand: Wendy's beating sales forecasts by nearly 110% since 2005
- Airline realignment will bring 100,000 new enplanements to Concourse B, 525,000 to Concourse A.
- Relief for overcrowding in Central Terminal, seating for 40
- Lower price point appeals to the 25% of travelers* who make no purchase, airport employees
- Level of investment greater than any quick serve tenant, eliminates Port investment to make unit leasable
- Proximity to Children's Play Area with family-friendly offerings
- Strength of McDonald's corporate investment with local operator



* Sea-Tac 2006 Enplanement Survey



Proposed Terms

Projected Sales: \$3.5 million

Tiered rent: 9-13%

Guaranteed MAG: \$280,000

Projected Port Revenues:
\$323,000

12-year lease

Investment: \$2 million by
McDonald's USA

Franchised to local operator